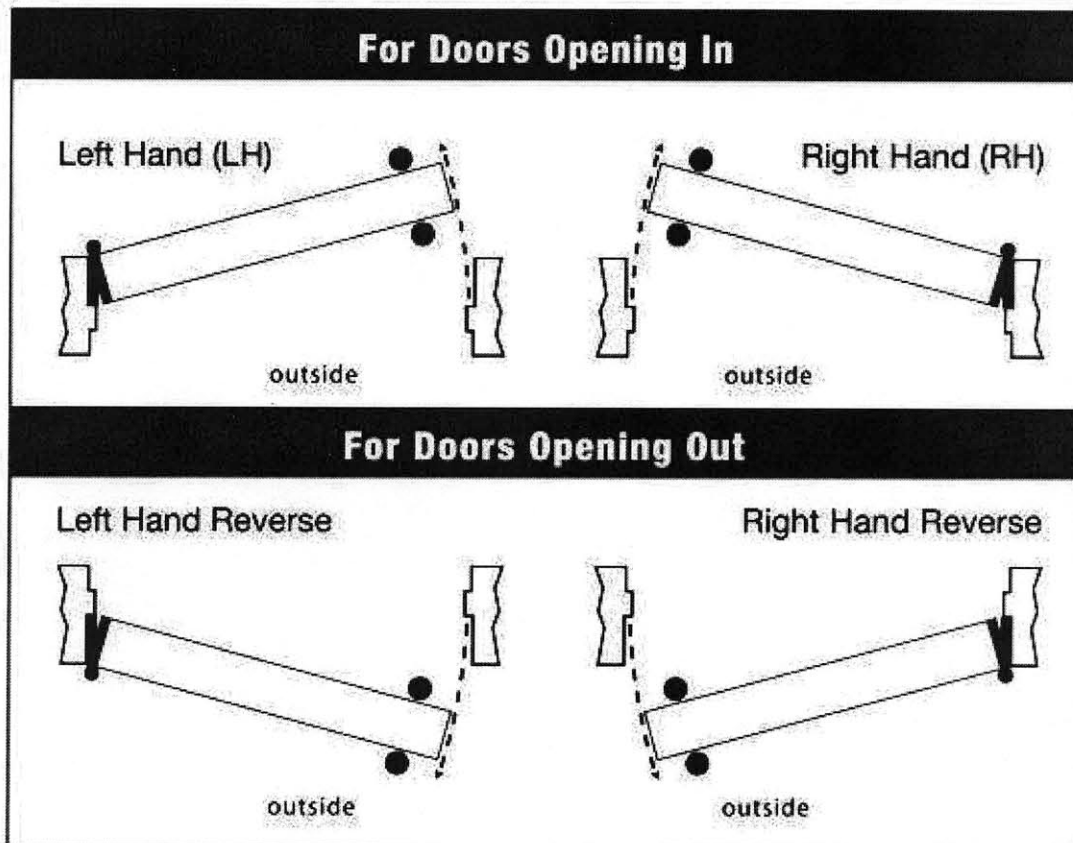
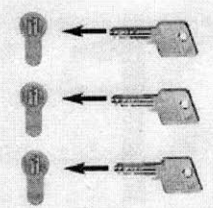
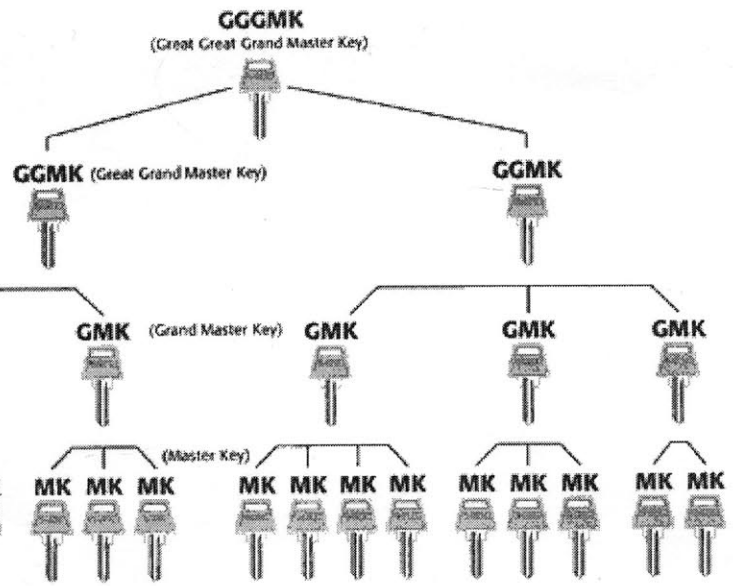
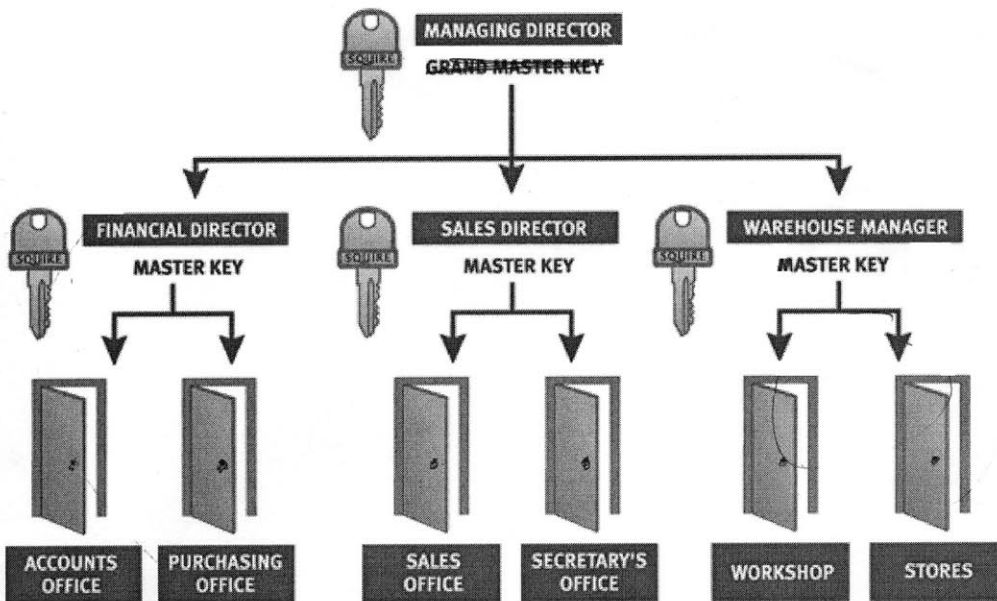


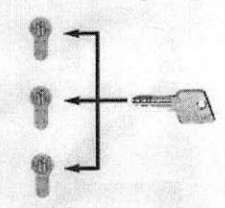
Door Handing

The hand of a door is determined from the outside of the door

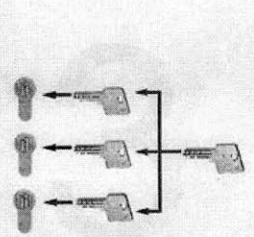




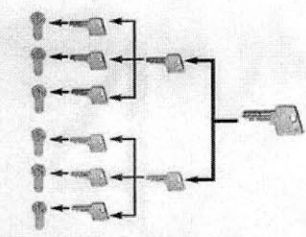
1 KD - Keyed to Differ
 Each cylinder is operated by its own individual key.



2 KA - Keyed Alike
 More than one lock / cylinder can be operated by the same key.



3 MK - Master Keyed
 A group of cylinders, normally all to differ and operated by their own individual key. All cylinders can be over-riden by a Master Key.



4 GMK Grand Master Keyed
 Used in situations with more than one Master Key group Master Keys operate cylinders within their own group, whereas the Grand Master Key can operate all the cylinders in all the groups.